

VASCULAR
NETWORK

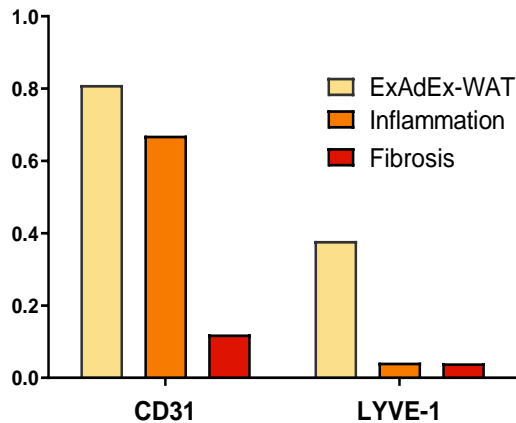
COLLAGEN
MATRIX

LYMPHATIC
NETWORK

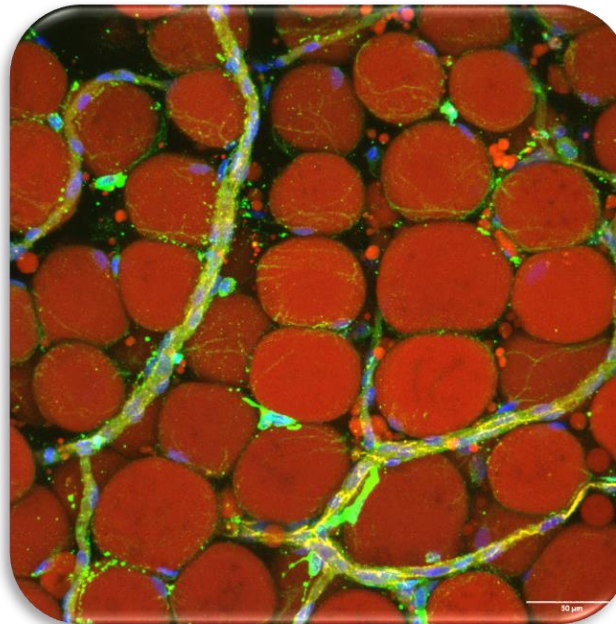
CLAIM A PRO-ANGIOGENESIS AND/OR PRO-LYMPHATIC EFFECT OF YOUR ACTIVE COMPOUNDS

AT CELLULAR, STRUCTURAL and FUNCTIONAL LEVEL

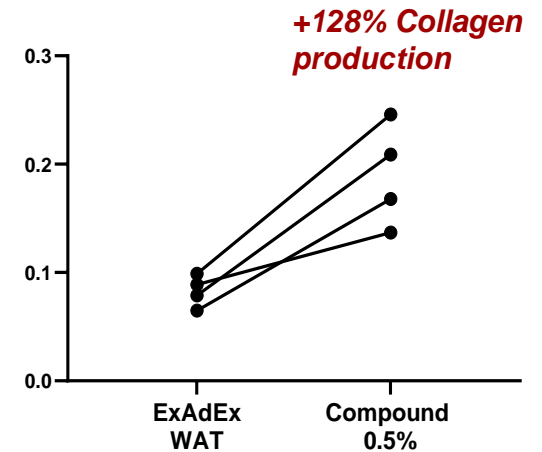
Level of RNA expression



TRANSCRIPTOMIC ANALYSIS FOR
MATRIX COMPONENTS



EVALUATION OF NETWORK DENSITY
(Imaging: LYVE1; CD31; PROX1, Laminin, Collagen, Elastin, etc.)



QUANTIFICATION OF NETWORK
SIGNAL INTENSITY