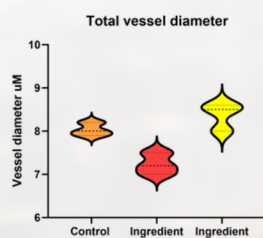


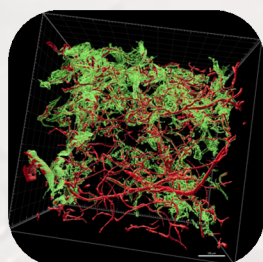
VASCULAR & LYMPHATIC TISSUE MODELS

3D *ex vivo* human tissue models of both vascular and lymphatic network to evaluate and visualize cosmetic ingredients effect for dark circles, under-eye bags and cellulite



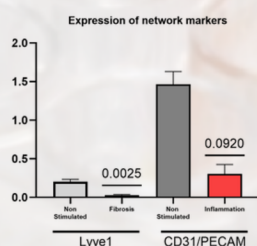
UNDER-EYE BAGS

- Lymphatic network markers: lymphangiogenesis and lymphatic function
- 3D imaging and quantitative parameters for structure analysis
- Anti-fluid retention activities



DARK CIRCLES

- Vascular network markers: angiogenesis, vascular inhibition
- 3D imaging and quantitative parameters (vasodilation/ vasoconstriction)
- Ameliorating micro-circulation, reducing blood extravasation



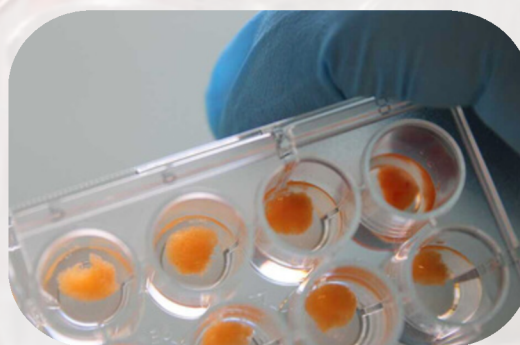
CELLULITE

- Simultaneous analysis of vascular and lymphatic networks
- Markers linked to structure and function for amelioration of lymphatic function
- Aqueous cellulite

UNIQUE EX VIVO HUMAN MODELS

Readouts & datasets:

- **Multi-parametric Analysis:** transcriptome profiling, 3D/4D imaging, lightsheet
- **3D/4D Imaging:** video reconstruction, vascular and lymphatic parameters (length, surface, diameter)
- **Vascular and Lymphatic:** the only model of both 3D vascular and lymphatic network, body-site specificity



CLAIM SUBSTANTIATION AND MARKETING SUPPORT

An ethical and valid alternative to animal experimentation to get closer to *in vivo* studies

Human tissue-based data to substantiate your cosmetic claims and drive product innovation

Full scientific and marketing support for your development needs

